



₹100

The

Ideal Home

The Ideal Home and Garden, February 2016 Vol 10 Issue 4

and Garden

Two Beautiful Homes

- Modern
- Functional
- Sociable
- Close to Nature

Bringing Valentine home with vintage style decorating

Celebrate with wow looks

WONDERFUL
colours and patterns for the home you love



Luxe



44

Just-in

46

Chic Spaces

48

Haute on the Web

Lifestyle

Less is
MAY
PRODIGATE
EXTRAORDINARY
LOVE
It is a waste of time.
There are too many
Mediocre things in
LIFE.
LOVE
SHOULD
NOT BE ONE OF
THEM.

100

Ideal Living

108

Nouveau Arrival

118

Food Fetish

124

Green House

Glamour & Comfort

This Delhi home by Studio An-V-Thot Architect is customised and enhanced to suit the homeowner's every comfort and need

Impression: Benoy Sebastian | Images: AVT Architects



This pretty home, by architects Ankita and Pratyoosh of Studio An-V-Thot Architect, has an enchanting appeal. Walk inside and fall in love with the elegant spaces. In the living room, you'll notice a 10 seater dining table, standing out owing to its back-lit, laser cut corian and glass on top design. The dining area overlooks

the kitchen, which hosts a wide island-counter finished in blue composite with comfortable seating. The colours used in the kitchen are a mix of light and dark grey.

The public area has a linear rug with a designer curvilinear chair done in red leather while a retro light complements the space. The wood storage and a six feet wide painting create

yet another focal point here. Other spaces, all on the upper level, include an extended bedroom cum lounge, a guest room, a family lounge, a meditation room, a multi-purpose room and a powder room.

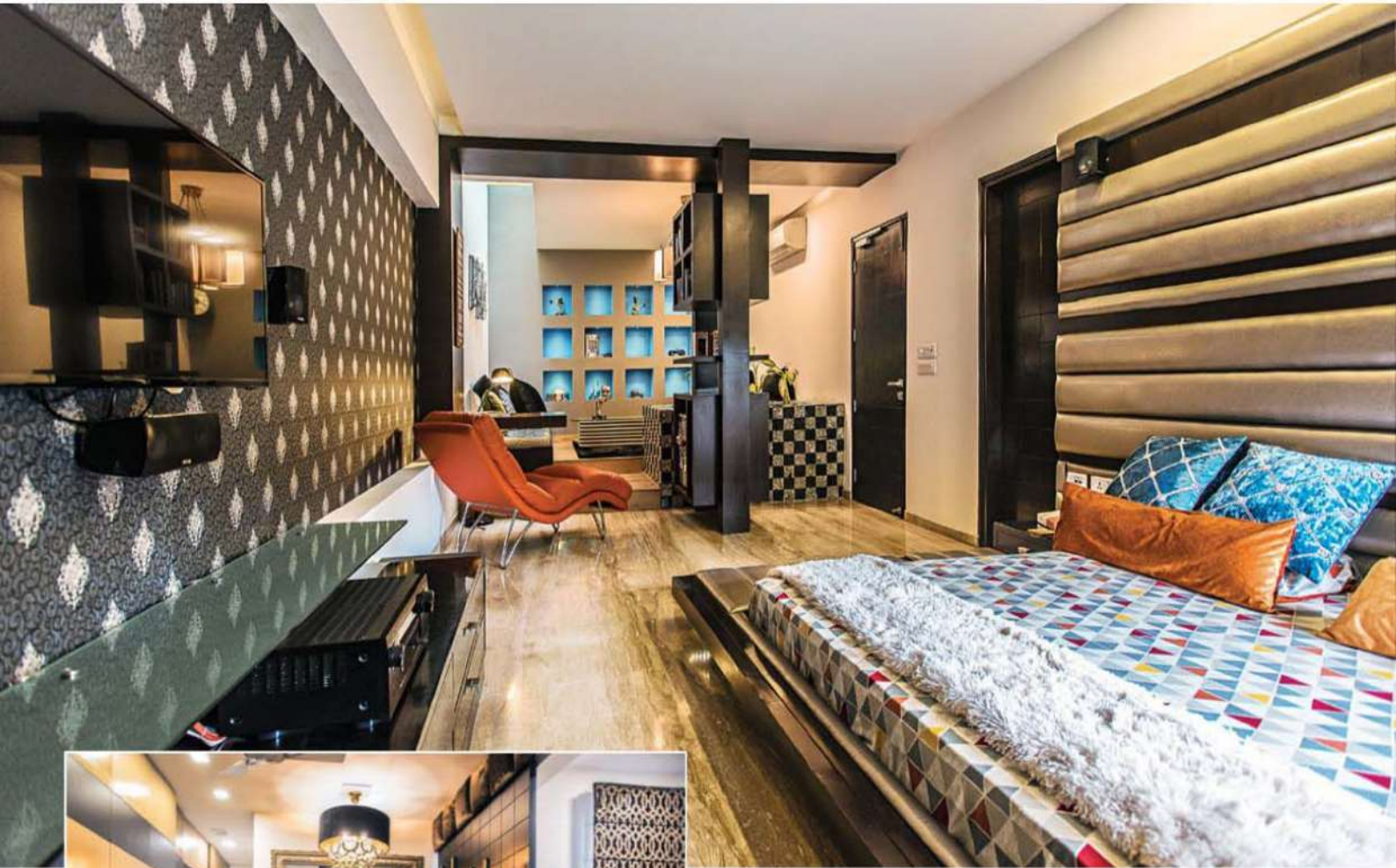
The newlyweds' bedroom, is created to accommodate a complete home within a room. A separate pocket attached to the bed area is used



Ankita & Pratyosh

The public area has a linear rug with a designer curvilinear chair done in red leather while a retro light complements the space.

First Look



as a walk-in wardrobe, and conceals an opening onto a private terrace with a set of patio furniture.

The attached washroom is finished using black tiles, which is complemented by glittering silver mosaic adding sparkle to the couple's space. The guest bedroom is a subtle mix of warm colours with a bed that has a fabric panelled back at the centre. Nearby is a store cum dress area as well as a study with a small library. Flooring throughout this room in brown and beiges is found with careful insertions of yellow painted in duco.

A light brown rug adds warmth here. At present, the multi-purpose room is used as a gym.

The family lounge has a relaxed feel with two dark leather recliners and a deep plush sofa-set. The room has a retro aesthetic with many artifacts and wall hangs complementing this concept, while the rear wall is finished with upholstered red leather to accentuate the look. Adjacent to the family lounge is a fairly small meditation room opening up to the North-East side, bringing in uniform daylight for refreshing

First Look



mornings. As the central area of the house is a double height area, it was enhanced to bring in a visual connect between the floors. The hanging ceiling was punctured to bring in natural light, and all walls were covered with dramatic wallpaper. This is accentuated by a custom-

made chandelier, and a laser cut, linear backlit panel, and playful geometric patterns act as the final touches to this refreshing home.

Contact Details:
Studio An-V-Thot
Architects Pvt. Ltd.
www.avtarchitects.com

